

A & D Style

Fabric Collections From Absecon Mills & Douglass Industries

FEATURING...

WARP SPEED® » **IN STOCK**
for quick delivery!

SEIZES®
S E A T I N G



Sherpa & Shire »

Sherpa & Shire have been the hallmark of durability and cleanability since their inception. Cited by Interior Design magazine for their longevity as the best of the past 25 years, these fabrics are nearly impervious to damage.

UPHOLSTERY FABRIC **LL***
100% Marquésa Lana™

40 New color introductions!

* Covered by a Limited Lifetime performance warranty.

YELLOW • GOLD • BRONZE

The color of intelligence, a cerebral left brain stimulant and aids in clear thinking and communications. As yellow moves towards gold, it is the color of symbolism and higher wisdom, hope and inner radiance.



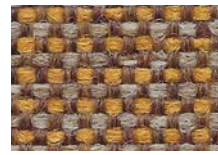
Sherpa Amber



Shire Nectar



Shire Marigold (IN)



Shire Acorn



Shire Phoenix (New!)

ORANGE • RUST • COPPER

A powerful color that implies enthusiasm and opportunity. Optimistic, energetic and non-conforming, it is in tune with world culture. Bright oranges for artistic accent, softer and muted variations are comforting and complement wood finishes.



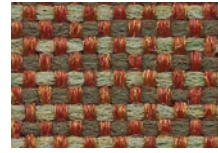
Shire Marmalade (New!)



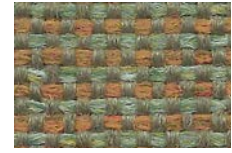
Shire Paradise (New!)



Shire Copper Clay (New!)



Shire Tigerlily



Shire Grassland



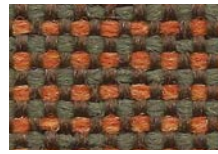
Sherpa Snappy (New!)



Shire Peachland (New!)



Shire Citrus (New!)



Shire Serengeti (New!)



Shire Garden



Sherpa Sparkler



Shire Adobe Orange (New!)



Sherpa Autumn (IN)



Shire Bricktown (IN)



Shire Caramel (New!)

RED • BURGUNDY • BERRY

A pick me up color that calls for action. Bold, passionate, powerful, loving and charitable. It is an energetic color that communicates strength and confidence. Pink and mauve and more relaxed and nurturing.



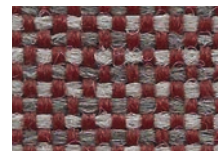
Sherpa Cardinal (IN)



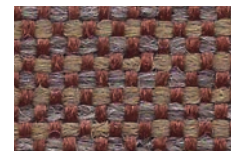
Sherpa Scarlet (IN)



Sherpa Mauve



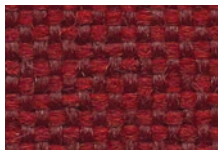
Shire Ascot (IN)



Shire Oxford



Shire Tulip (New!)



Shire Red Rose (IN)



Sherpa Rosewood



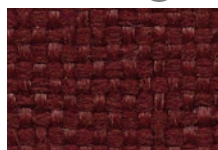
Shire Aristocrat



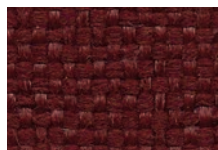
Shire Black Cherry



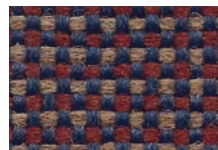
Sherpa Garnet



Sherpa Maroon (IN)



Sherpa Newport



Shire Country (IN)



Shire Berry Blue (New!)

GREEN • SAGE • JADE • HUNTER

This is the color of hope, evoking feelings of renewal and growth. It is the most healing color... the center of the spectrum, representing balance. Light yellow green is optimistic of new growth, and darker green signifies maturity.



Sherpa Leap Frog (New!)



Shire Dill (New!)



Shire Sage (New!)



Shire Waterfall (New!)



Shire Pine



Shire Key Lime (New!)



Shire Cammo (New!)



Shire Patina (IN)



Shire Pesto



Sherpa Jade



Shire Heath



Shire Limelight (New!)



Sherpa Moss



Sherpa Hunter



Sherpa Billiard (IN)

NEUTRAL • BROWN • TAUPE • GREY • CHARCOAL

Neutrals are infused with complex and intricate sensibilities. They encompass a vast perceptual range... simple, sincere and stable, they are also strong and virtuous, complimenting all colors of the spectrum.



Shire Travertine (New!)



Sherpa Grey Mix



Shire Sesame (IN)



Shire Fossil (IN)



Sherpa Grey Heather (IN)



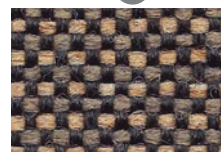
Shire Canvas (New!)



Shire Greystone



Shire Woodstock (New!)



Shire Hopsack (IN)



Shire Black Marble (IN)



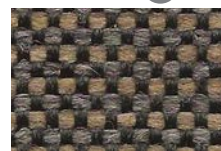
Sherpa Brown Haze (IN)



Sherpa Gargoyle



Shire Horizon (New!)



Shire Stonewall (New!)



Shire Aqueduct



Shire Blair Brown (New!)



Sherpa Mocha (New!)



Shire Koala (IN)



Shire Espresso (IN)



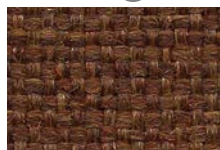
Shire Stable (New!)



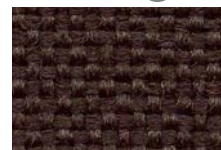
Sherpa Coffee (New!)



Shire Bison



Sherpa Clove



Sherpa Mahogany



Sherpa Black (IN)

BLUE GREEN • TEAL

Immersed in a sense of peacefulness, blue greens convey tranquility and serenity. This is the ideal color for calm and rest. Brighter tones are lighthearted and playful, while deeper tones are more soulful and pensive.



Shire Spa Blue (New!)



Shire Turquoise (New!)



Sherpa Teal (Old but New!)



Shire Tahoe Blue (New!)



Sherpa Ivy League

BLUE • NAVY

Beloved for its friendly nature, it conveys the expansive feel of the sky. Light blues are sweet and celestial, midtones are crisp and soothing, and deep blues convey power, security, friendliness and trust.



Shire Steel Blue (IN)



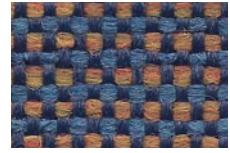
Sherpa Denim



Shire Tuscan Blue



Shire Titan Blue (IN)



Shire Cordon Bleu



Sherpa Academy (IN)



Shire Chesapeake (New!)



Sherpa Hudson Bay



Shire Potomac (New!)



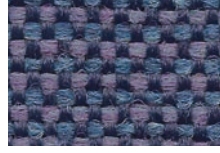
Shire Mariner



Shire Commodore (IN)



Shire Merrimac (New!)



Shire Lobelia



Shire Gettysburg (New!)



Shire Levi Blue (New!)



Shire Midnight



Sherpa Indigo (IN)



Shire Delft Blue (New!)



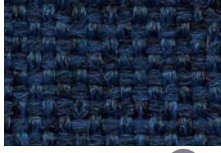
Shire Ink (IN)



Sherpa Keydet Blue (New!)



Sherpa Royal (IN)



Sherpa Dark Blue (IN)



Sherpa Special Blue



Sherpa Navy (IN)



Shire Dark Night (New!)

PURPLE • VIOLET • PLUM

Brings a sense of inner calm and feelings of self worth and inspiration. Violet is the color of knowledge, self respect, dignity and wealth. Softer tones are sweet, serene and unpretentious. Deeper tones are exciting, sophisticated and passionate.



Shire Grey Lilac



Sherpa Viola



Sherpa Purple Velvet



Sherpa Concord



Sherpa Grape (IN)



Shire Sesame



Shire Black Marble



Shire Hopsack



Shire Marigold



Shire Patina



Sherpa Borwn Haze



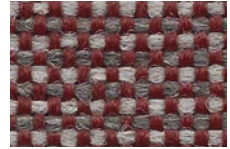
Sherpa Grey Heather



Shire Fossil



Shire Koala



Shire Ascot



Shire Espresso



Shire Steel Blue



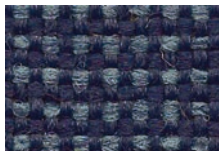
Shire Titan Blue



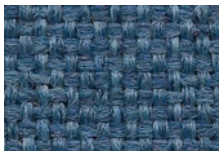
Sherpa Autumn



Sherpa Maroon



Shire Ink



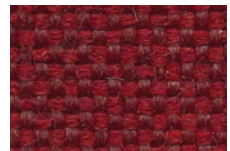
Sherpa Academy



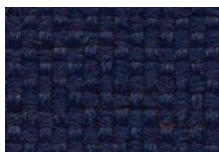
Shire Commodore



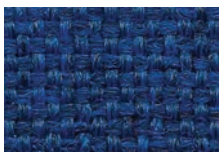
Shire Bricktown



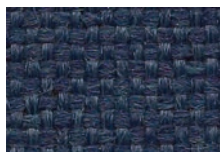
Shire Red Rose



Sherpa Navy



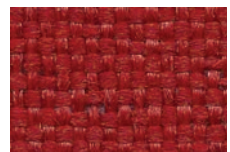
Sherpa Royal



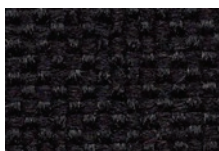
Sherpa Indigo



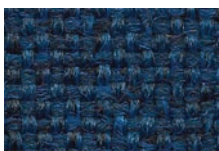
Shire Country



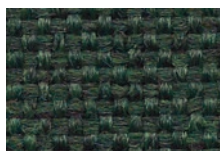
Sherpa Scarlet



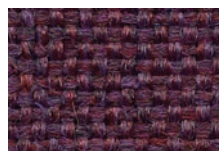
Sherpa Black



Sherpa Dark Blue



Sherpa Billiard




Sherpa Grape



Sherpa Cardinal

Warp Speed® Colors

In our continuing efforts to provide you with the best service and quickest delivery, our most in-demand Sherpa and Shire colors are now in our Warp Speed® In Stock program. We have carefully analyzed the popularity of the colors, and the resultant winners are represented here and are all available for immediate shipment. Shire Koala, Shire Steel Blue and Sherpa Cardinal have been added from the standard collection. Actual fabric swatches for these colors can be found on this card, marked with the In Stock icon. 

Please note that only the colors indicated on this panel are in the Warp Speed® In Stock program.

Sherpa & Shire UPHOLSTERY FABRIC

LL* Patterns are covered by a limited lifetime performance warranty. Contact your sales representative for written warranty terms and conditions.

TECHNICAL INFORMATION

Fiber: 100% Marquésa Lana

Backing | Finish: Acrylic

A Abrasion Resistance: 250,000 double rubs (wire screen)

Weight: 16.0 ounces per linear yard (±1 oz.); 494 g/m

Width: 54" (137-140 cm)

Repeat: None (Pattern is woven up the roll and suitable for railloading)

*** Lightfastness:** 400 Hours, Class 5

☘ Colorfastness: Wet - Class 5 | Dry - Class 5

☆ Seam Slippage: Warp - 91 lbs | Fill - 95 lbs.

Cleaning Instructions: WS - For water-based stains, use mild detergent foam or upholstery shampoo. For oil based stains, spot clean fabric with a dry cleaning solvent, being sure to test area first.

🔥 Flame Resistance: California Technical Bulletin 117-2013 Section 1: Cover Fabric Test; CS-191-53, Class 1; BIFMA X5.7-1991; UFAC, Class 1; B. S. 5852 Part 1: 1979 Ignition Source 0, smouldering cigarette.

Fabrics by Absecon Mills, Inc. Fabric performance symbols indicate that a fabric performs to commercial furniture manufacturing standards and passes all applicable testing as specified by the Association for Contract Textiles (ACT).

10/2012 | For additional cards or memo samples:
email samples@aanddstyle.com



Absecon Mills is focused on being a responsible corporate entity and we are continually striving to find ways to help preserve our environment, increase energy efficiency and reduce waste. Our mode of manufacturing is specifically designed to prevent damage to the environment. Our products are woven using wind power and many are constructed with polypropylene (a by-product of gasoline manufacturing, utilizing post-industrial waste) and recycled polyester, which helps keep post-consumer waste in the material stream and out of landfills. Absecon offers finishes that use ten times less fluorocarbons than conventional finishes and are SCS Indoor Advantage Gold certified. We participate in a fabric recycling program and work hard to lessen our footprint on the environment. For more information on our green initiatives, please visit www.absecon.com.



WOVEN WITH WIND POWER

Colors may vary slightly from dye lot to dye lot.

*ASTM-D-3597-02: Seam 12mm from edge using 7 stitches per 25mm (1"), plain lock stitch and a 22 ballpoint needle)

Marquésa Lana®



SERIES®
S E A T I N G

SERIES USA

Corporate Headquarters

20900 NE 30th Avenue

Suite 901

Miami, FL 33180

P 1-800-729-1190 | +1-305-932-4626

E info@seriesseating.com

SERIESSEATING.COM